

KIM NOCE

**SYNERGETIC,
MULTIMODAL AND
MIX-MEDIA**

MAKER/ ENABLER

**OF EMPATHIC,
INTERACTIVE
PARTICIPATORY &
IMMERSIVE
EXPERIENCES**

**COURSE LEADER
SENIOR LECTURER
PHD SUPERVISOR**

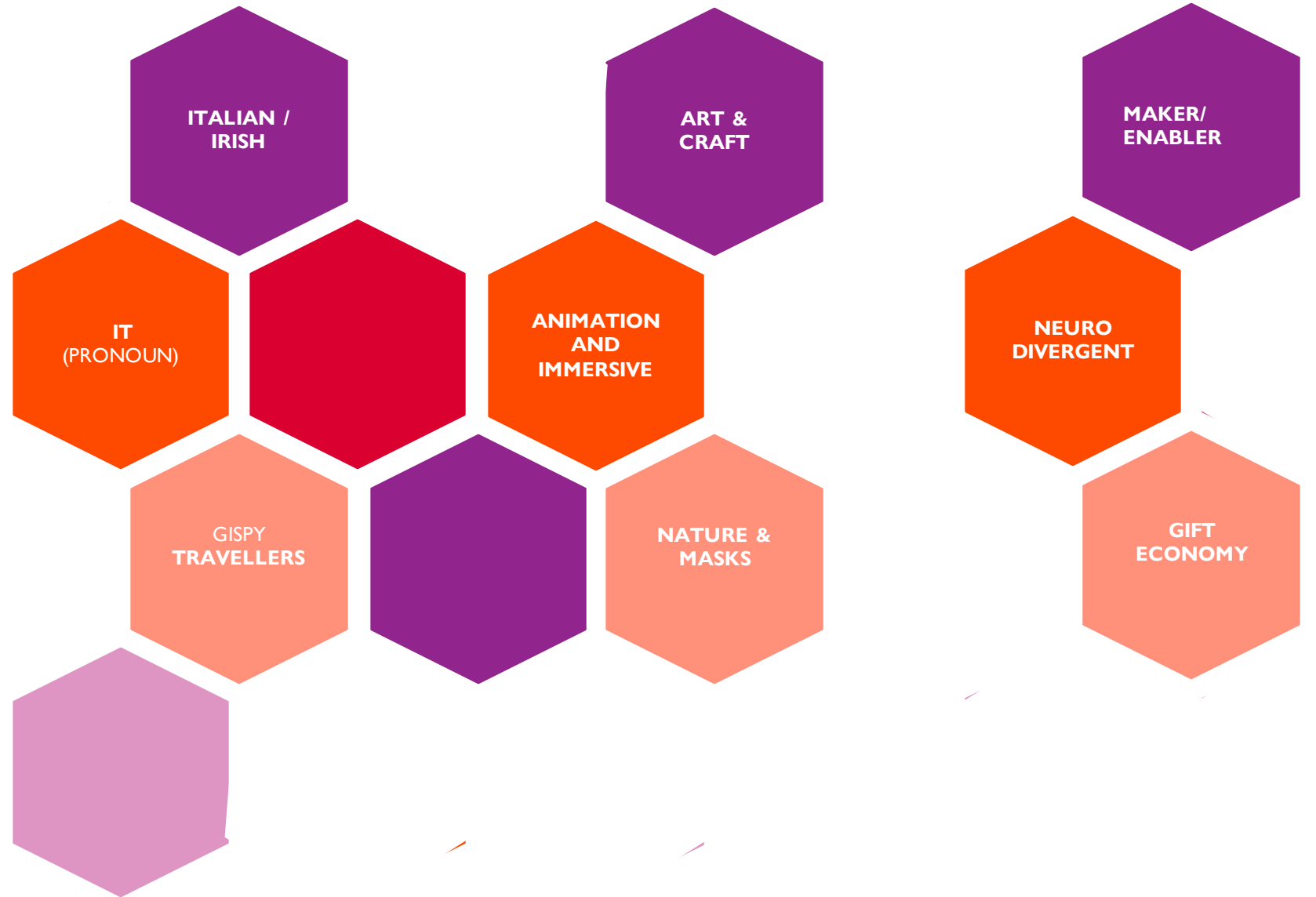
**TRAINING
WORKSHOPS
LECTURE
MASTERCLASS
RESEARCH
RESIDENCIES**

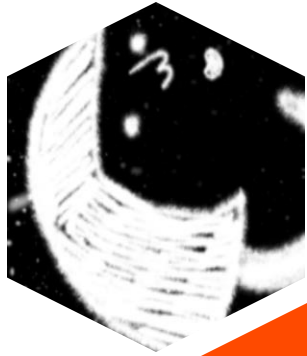
IDENTITY

ID = IDENTIFICATION

ENT = DENOTING AN AGENT OR ACTION

ITY = DENOTING A DEGREE OF A QUALITY





Cities of Ladies

MAKER



Partecipatory Documentary Animation in VR/360

Animate Project ACE - 100 festivals + 10 awards



Love In Idleness



ARTIST

Traditional 2D Animation handmade

Film London Shakespeare 400 Screen World Tour



The evening her mind jumped out of her head

ANIMATOR



Short animated film and mapping projection

www.kimnoce.com

In the beginning

GIFT ECONOMY

Animated Graphic Novel for an immersive storytelling



[HTTPS://VIMEO.COM/777641138](https://vimeo.com/777641138)



[HTTPS://VIMEO.COM/650910402](https://vimeo.com/650910402)

COURSE LEADER
LECTURER
RESEARCHER
PHD SUPERVISOR
ENABLER

CREATIVITY
AND/OR
INDUSTRY

CRAFT
AND/OR
TECHNOLOGY

THE INDIVIDUAL
AND/OR
THE COLLECTIVE



TOWARDS A RADICAL PEDAGOGY: PROVISIONAL NOTES ON LEARNING AND TEACHING IN ART & DESIGN

JOHN DANVERS

2003

"A RE-ORIENTATION
OF LEARNING AND
TEACHING IS SUGGESTED
AROUND A PROCESS
BASED PEDAGOGY
THAT PLACES PARTICULAR
EMPHASIS ON
INDETERMINACY, PLURALISM,
REVISIBILITY AND DIALOGUE"

ART AND DESIGN TEACHING
PRACTICES (JOURNAL ARTICLE,
2003).PDF

DIVERGENT LEARNING AND TEACHING

LEARNERS ARE
ENCOURAGED
TO EXTEND THE
ARENA OF POSSIBILITIES
, NOT TO SEEK
ENDURING SOLUTIONS
OR ANSWERS

PERSPECTIVALISM

INVOLVES A BELIEF THAT
KNOWLEDGE IS ALWAYS
PARTIAL, INCOMPLETE
AND CONTINGENT

REVISIBILITY

GIVEN THE RELATIVE,
EVER-
CHANGING CONDITIO
N OF KNOWLEDGE, IT
FOLLOWS THAT ALL
VIEWS, THEORIES &
OPINIONS ARE SUBJECT
TO REVISION.

SELF-CONSTRUCTION, SELF-REALISATION AND CHANGING NOTIONS OF 'SELF'

???

"WE DON'T SEE THINGS
AS THEY ARE, WE SEE
THEM AS WE ARE" ANAIS
NIN

"THE AIM OF EDUCATION
- IN FACT THE AIM OF
LIFE - IS TO WORK
JOYFULLY AND TO FIND
HAPPINESS."
SUMMERHILL (1960)

REFLECTIONS

IT RESONATE WITH ME
BASED ON MY PRACTICAL WORK
WHICH I CAST ASIDE ONCE
I ENTER THE REALM OF
EDUCATION

I AM TEACHING IN AN
ENVIROMENT WHICH WORKS
AGAINST THE GRAIN OF MY
BELIEFS

CASE STUDIES OF DIFFERENT SCHOOLS (
LONDON DRAWING SCHOOL,
NFTS, MARGATE STUDIO, OPEN
SCHOOL EAST)

RESEARCH